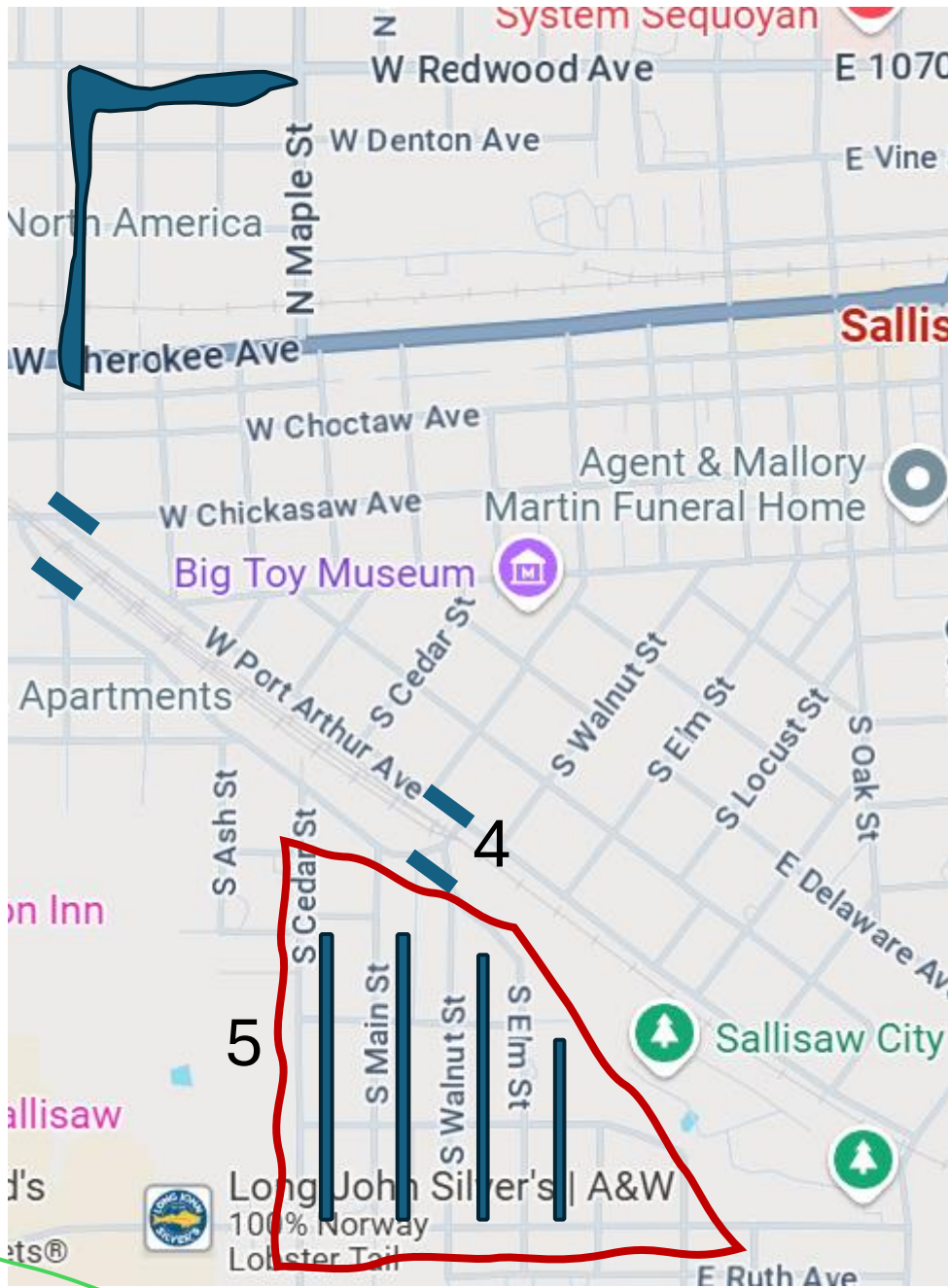


Connect & Flow

High Level Cost Estimate

(Projects #1–4 traffic flow; #5 walkability; #6 mobility)



1

2 - 3

4

5

6

6

6

system Sequoyan

W Redwood Ave E 1070

W Denton Ave E Vine

North America

N Maple St

W Cherokee Ave Sallisaw

W Choctaw Ave

W Chickasaw Ave Agent & Mallory Martin Funeral Home

Big Toy Museum

W Port Arthur Ave

S Cedar St

S Walnut St

S Elm St

S Locust St

S Oak St

S Ash St

S Cedar St

S Main St

S Walnut St

S Elm St

Sallisaw City

Long John Silver's | A&W

100% Norway

Lobster Tail

E Ruth Ave

1

Pinch Point Fix

Large Truck Route
Diverts Trucks away
From Maple & Cherokee

Requires widening
One block North of Redwood
Three blocks on Redwood
Three blocks on Washington

Reduce speed limit to 15
Throughout the route

Ideally add stop light at
Maple & Redwood
Redwood & Washington
(requires State participation)

Signage for trucks left only
At Maple and Cherokee



2

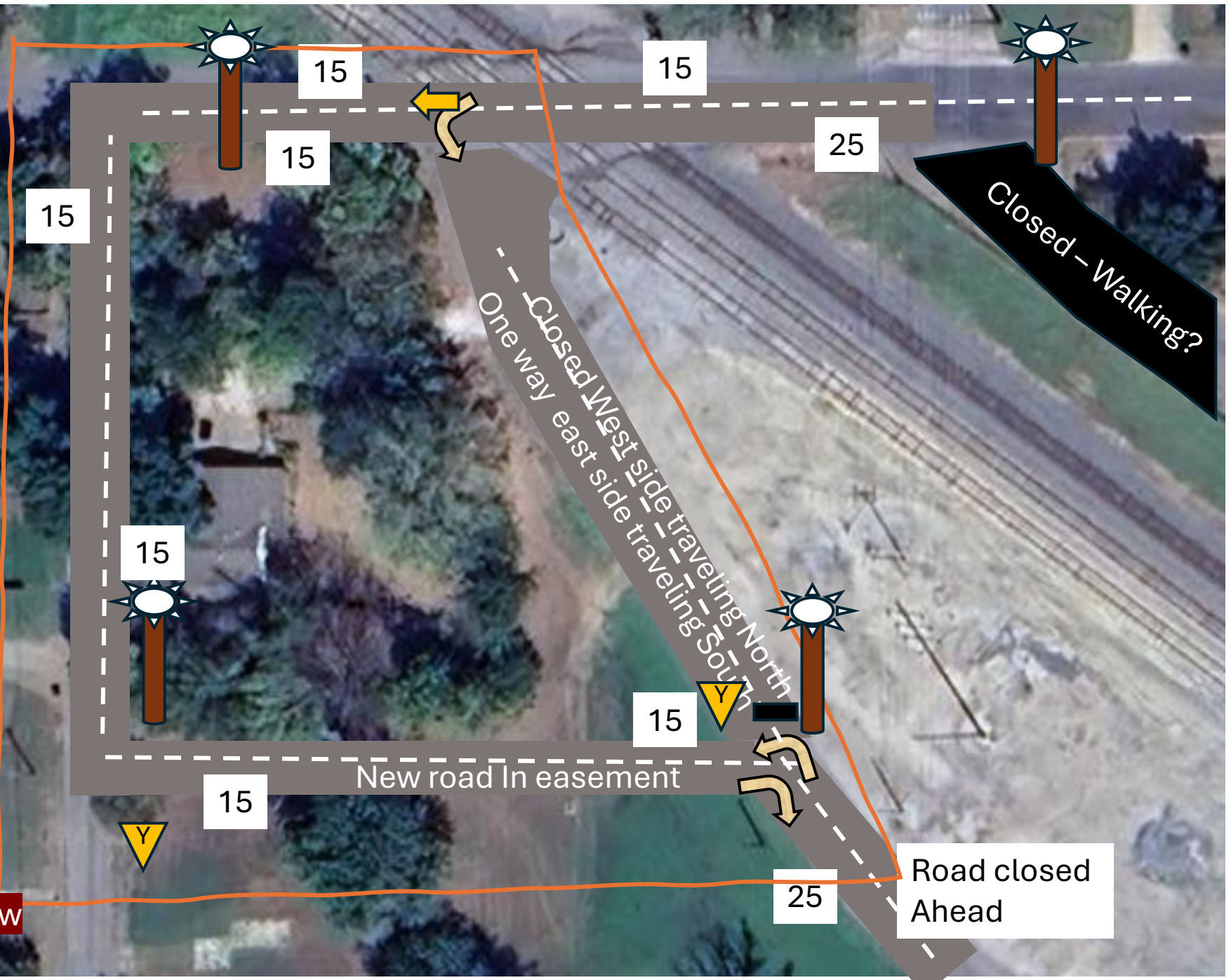
N Rail Safety

Safety route
Consolidated dangerous
Right and turn into new
route

Construct E-W road in the
Easement Reduce speed
Limit to 15 along the path

Block (close) West side of
Existing connection
Communicate One way
On East side of existing

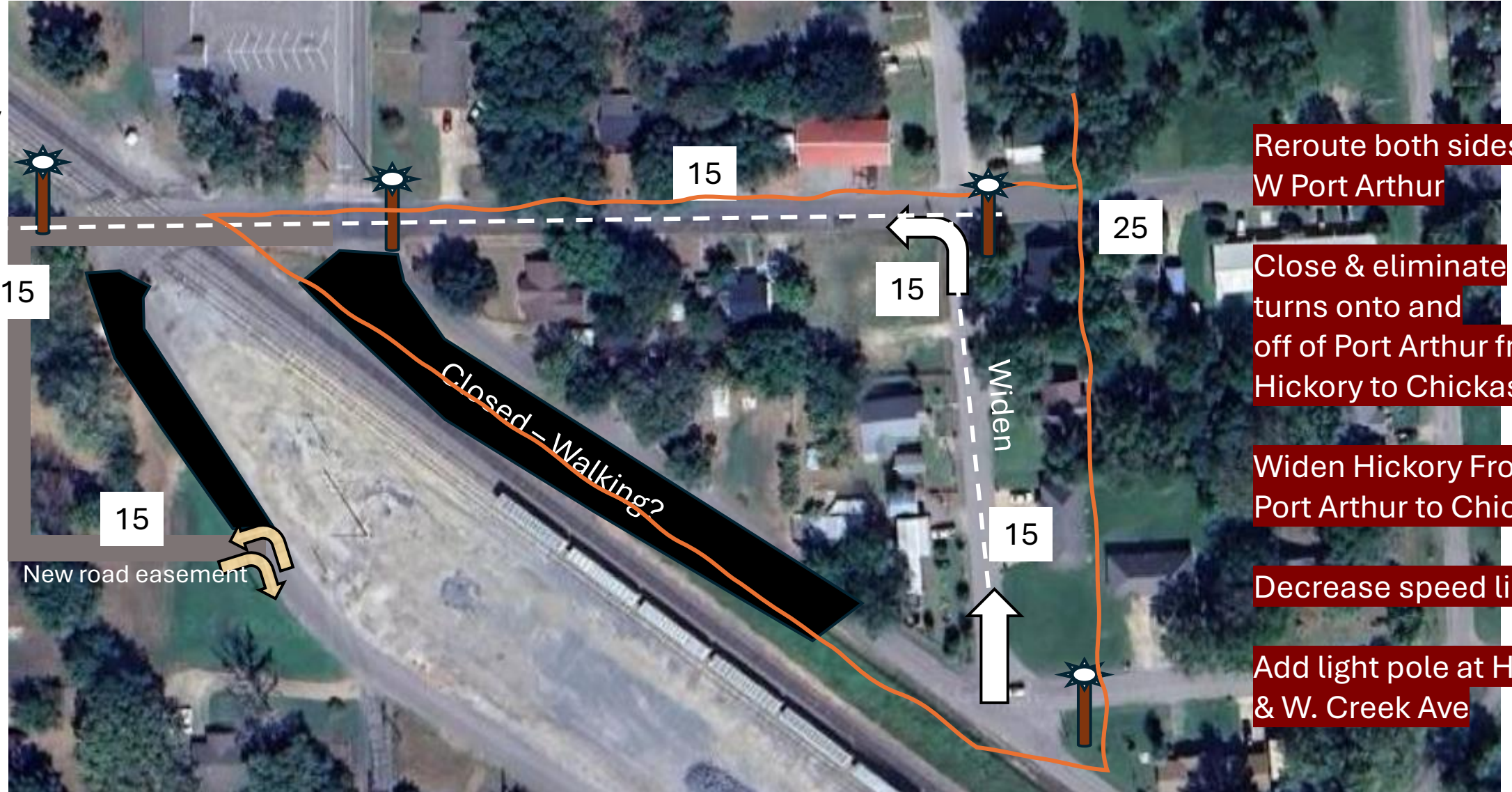
Add three pole lights
Widen Residential road
Widen portion of Chickasaw



Road closed
Ahead

3

N Rail Safety



Reroute both sides of W Port Arthur

Close & eliminate turns onto and off of Port Arthur from Hickory to Chickasaw

Widen Hickory From Port Arthur to Chickasaw

Decrease speed limits

Add light pole at Hickory & W. Creek Ave

4

S Rail
Safety



Safety
Prohibit left turn from W Port Arthur
Across tracks to E Port Arthur

Install median fixture with Light pole

Add stop signs as shown

Add "Only" sign for "T" at W. Port Arthur
Traveling across the tracks from
E. Port Arthur and a "Stay Right"

Add light poles as shown



5a

East Central Walkability



Close up illustration of easement side walks splitting

Cedar-Main
Main-Walnut
& Walnut-Elm

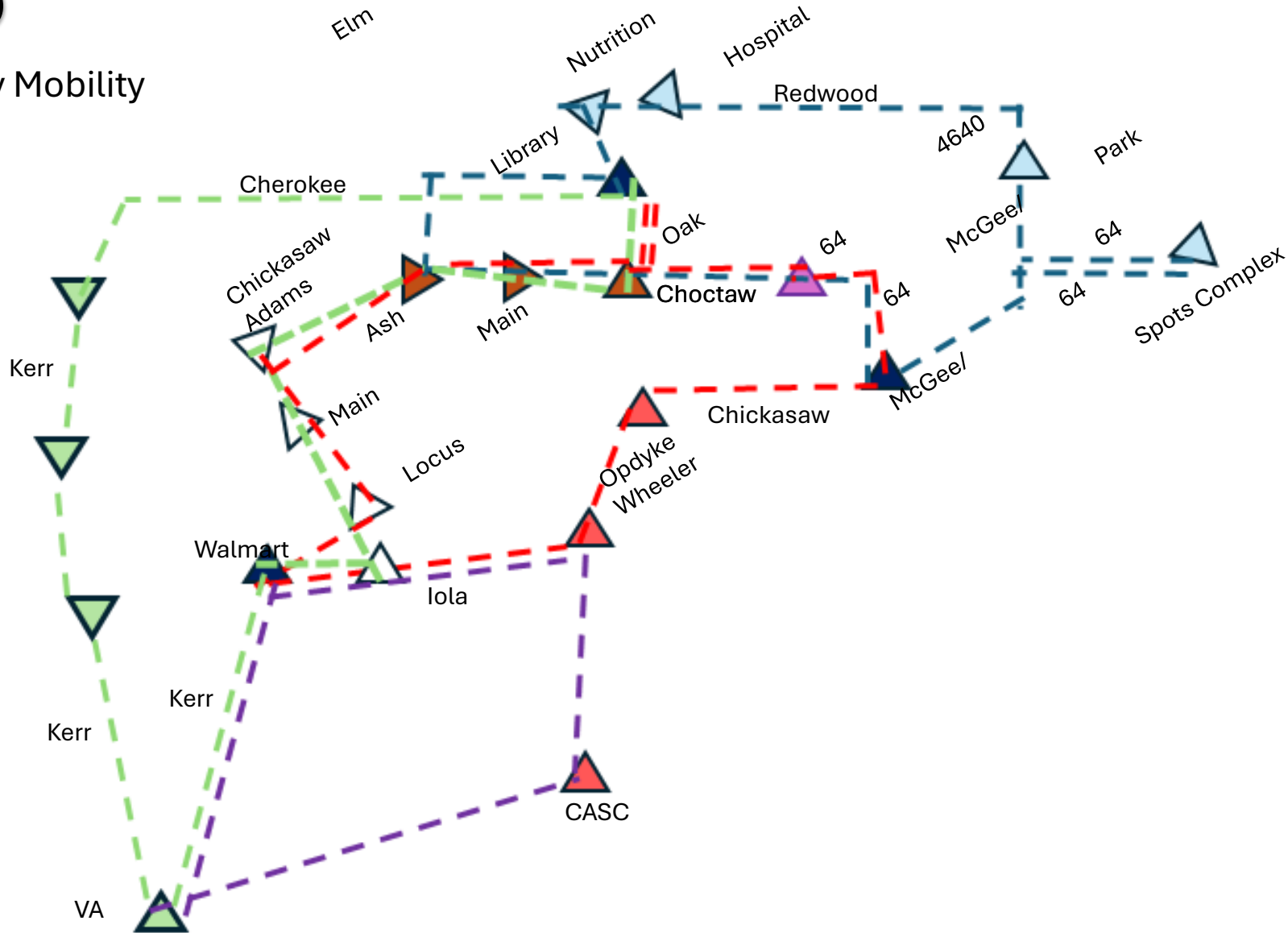
5b

East Central Walkability



6

City Mobility



Four generalized KATS bus routes

Transfer stations:

VA, Park, Post Office; Downtown;
Hospital; Ruth Retail Strip;

Community sites

Three city parks; Pool
ICTC and CASC

Business centers

Industrial park; Retail strip;
City center; Healthcare; Casino
Kerr hotels/motels

Residential areas

From Redwood south to Cherokee
Chickasaw communities
East of tracks
West of tracks

Apartments; Health Centers;
Airport

					Project Cost
Project	Street blocks	Alley path blocks	Streetlights	Other	
Project 1	7 widen roads	n/a	1	Deep ditches	1
Project 2	5 widen road	1 block new road	3	One way road closure	2
Project 3	2 widen road	n/a	3	Two-way close road	3
Project 4	n/a	n/a	2	Median fixture	4
Project 5	n/a	11 block alley	16	22 cement marker @ crossings	5
Project 6	n/a	n/a	n/a	10 transfer stations	6
Totals	14 widen	12	25	14 blocks ditches Road closures 22 short cement markers 10 transfer stations	
Category Cost	Street	Alley	Lights	Other	